

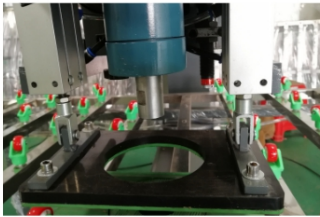
Address: NO.6W.Liangda Road, Sanzhou Lunjiao Street, Shunde District, Foshan City, Guangdong Province, China.

Mobile Phone: +8613924551532 (Whatsapp)

Website: www.gtm-machine.com

E-mail: elainepenn@126.com / elaine@gtmmachine.com

GJ1 Glass Horizontal Drilling Machine



GJ1

1. General Description:

1. GJ1 is equipped with one set of drill bit spindle, with high production efficiency;
2. Simple structure leads to simple maintenance and very easy operation;
3. Use it as a tool but not a complex machine, no need for a professional technician to maintain it.
4. Stable performance, simple operation, no vibration, low noise, and simple adjustment;
5. Top heads are manual while bottom heads are automatic, can be used for scattered and mass production;

2. Technical Parameter:

- 2.1. Max. size of processing: 2200x3000
- 2.2. Processing thickness: 3~40mm
- 2.3. Hole diameter: $\varnothing 5 \sim \varnothing 110$ mm
- 2.4. Weight: 600KG
- 2.5. Power: 4KW
- 2.6. Size: 2000x1700x1600
- 2.7. Height of working table: 1000mm

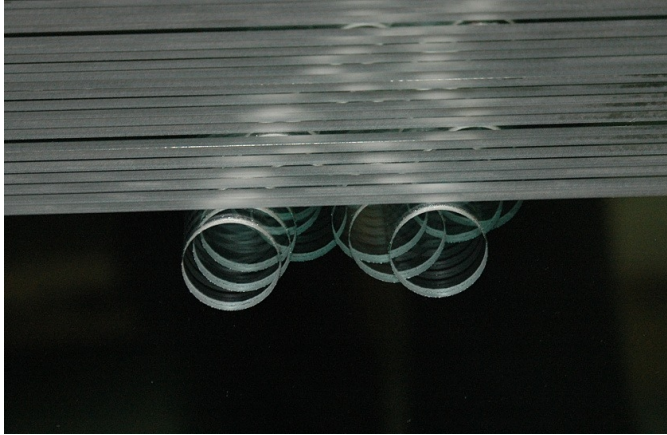
Address: NO.6W.Liangda Road, Sanzhou Lunjiao Street, Shunde District, Foshan City, Guangdong Province, China.

Mobile Phone: +8613924551532 (Whatsapp)

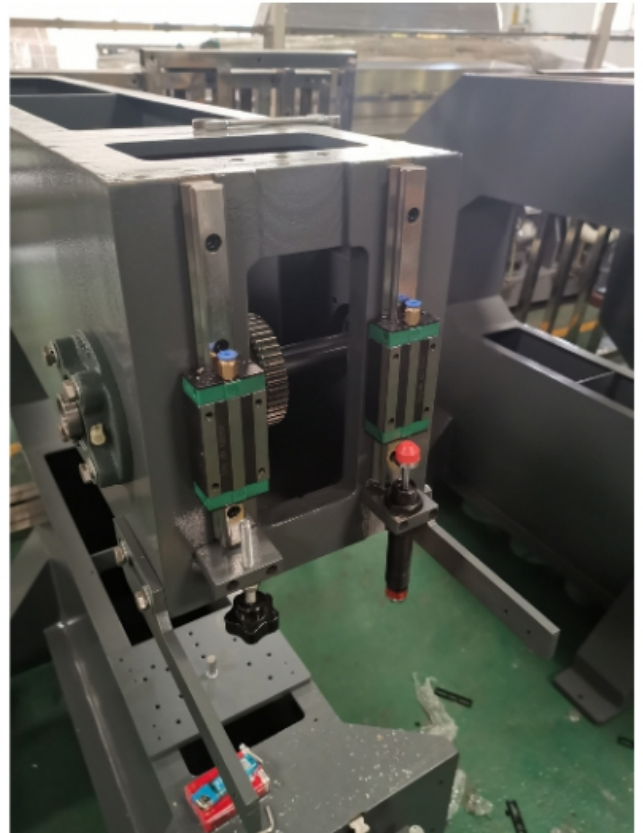
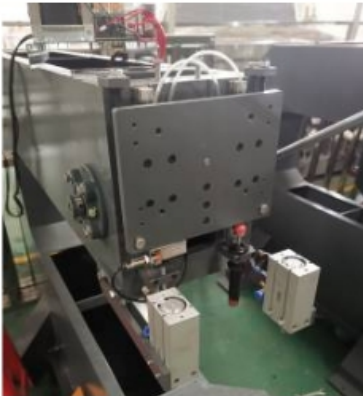
Website: www.gtm-machine.com

E-mail: elainepenn@126.com / elaine@gtmmachine.com

3. Sample



4. Details





GTM GLASS MACHINERY CO., LTD.

Address: NO.6W.Liangda Road, Sanzhou Lunjiao Street, Shunde District, Foshan City, Guangdong Province, China.

Mobile Phone: +8613924551532 (Whatsapp)

Website: www.gtm-machine.com

E-mail: elainepenn@126.com / elaine@gtmmachine.com

